



Radical Hospitality

Deacon Keith Strohm (keith@m3catholic.com)

A Part of Our Tradition

“Do not neglect hospitality, for through it some have unknowingly entertained angels.”

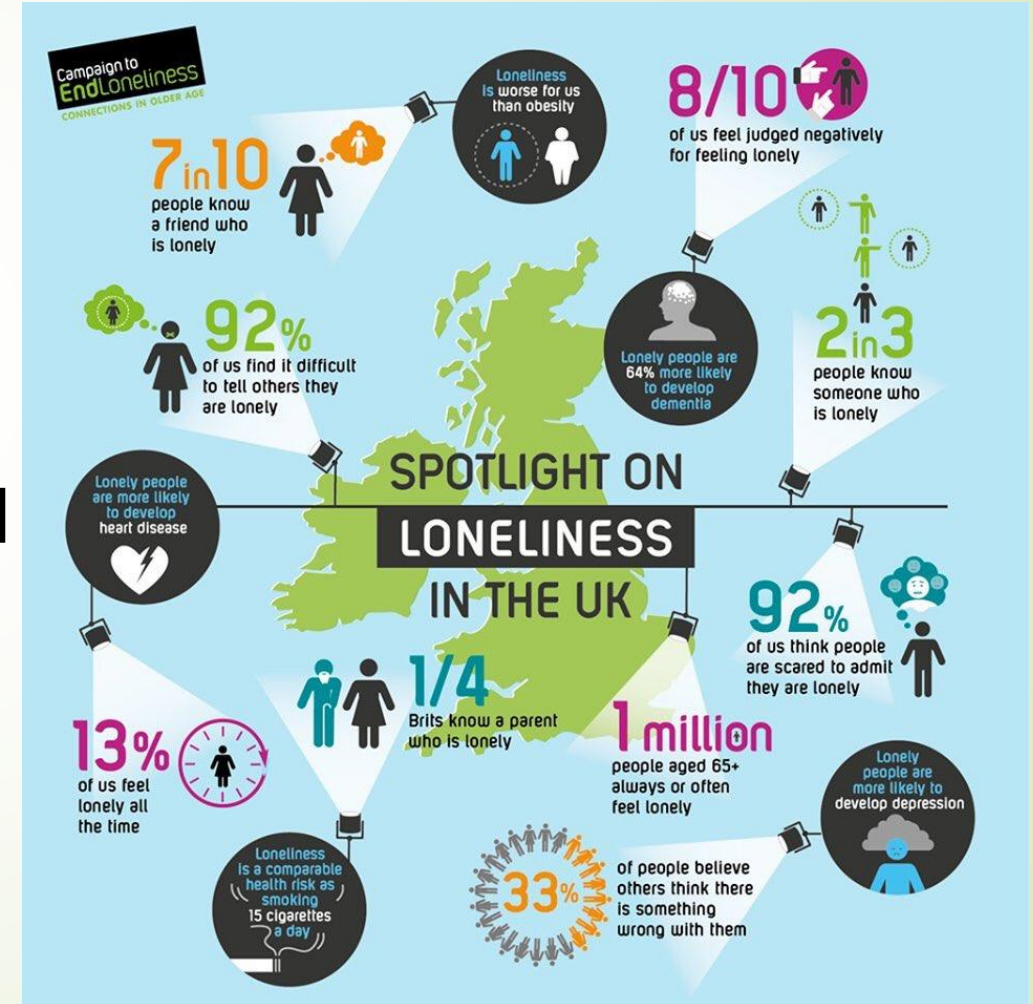
– Hebrews 13:2



A Modern Necessity

“Digital connections and the sociable robot may offer the illusion of companionship without the demands of friendship. Our networked life allows us to hide from each other, even as we are tethered to each other. We’d rather text than talk.”

– Sherry Turkle, *Alone Together*



Essential to Mission

“The principal mission of the Church is evangelization, bringing the Good News to everyone.”

– Pope Francis

“We face . . . the formidable task of passing on the faith to the next generation . . .”

– Cardinal Cupich



Defining Terms

- ▶ **Radical Hospitality is not**
 - ▶ Being more welcoming
 - ▶ Offering coffee and donuts
 - ▶ Introducing yourself before mass
- ▶ **The goal of Radical Hospitality is not**
 - ▶ Increasing mass attendance
 - ▶ Getting people more involved
 - ▶ Driving up the number of parishioners



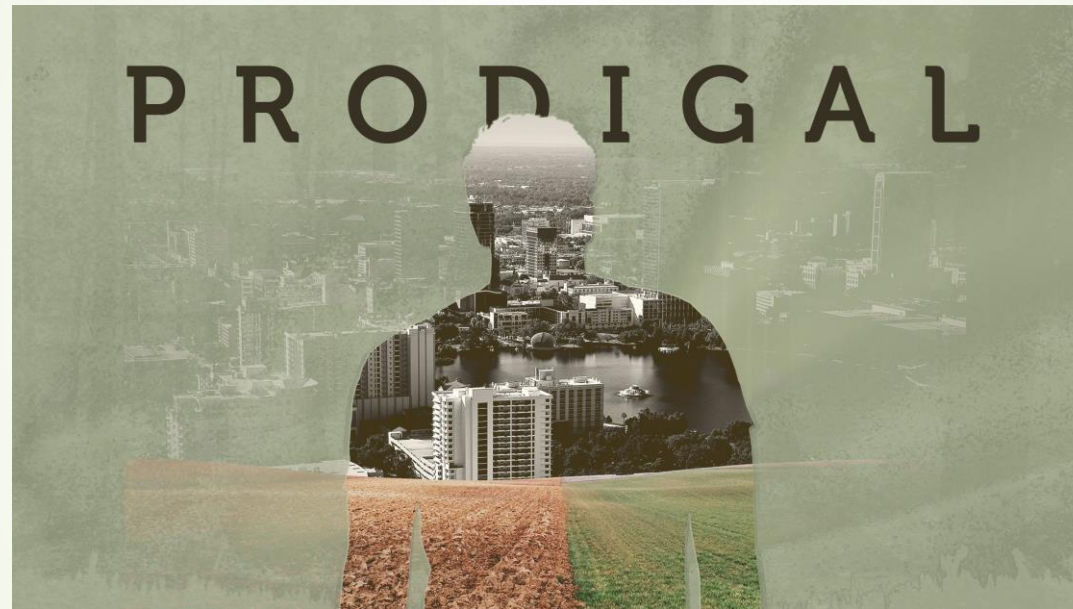
Defining Terms

Radical = “from the root”



Radical hospitality is a return to the heart of the Christian experience, where we, who chose exile and lived as strangers in relation to God, His Kingdom, and ourselves, were welcomed home by a loving father who did not count the cost for our return.

Radical Hospitality



What we have received freely, we must give freely (Matthew 10:8)

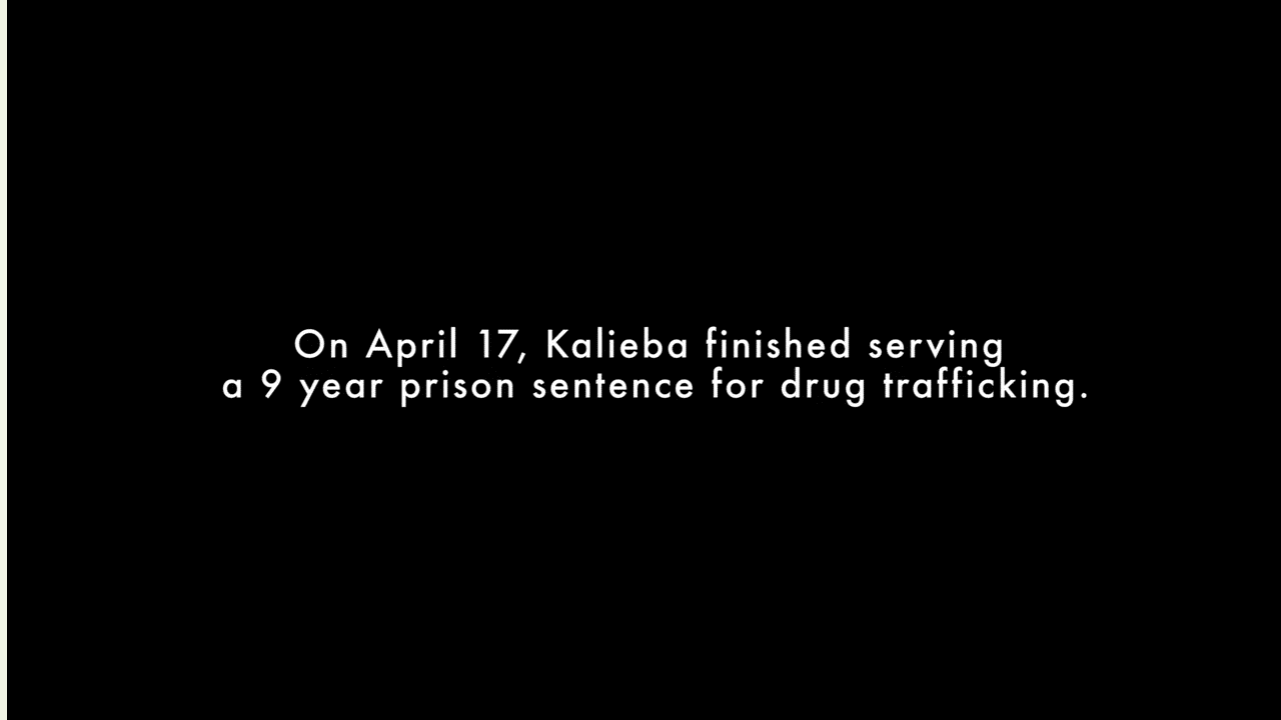


Radical Hospitality





Radical Hospitality



On April 17, Kalieba finished serving
a 9 year prison sentence for drug trafficking.



Radical Hospitality

- **Is Rooted in Christ**
- **Is “Missional”**
- **Is Connected to the Gospel Message (Kerygma)**
- **Is Person Centered**
- **Is Intentional**

To embrace Radical Hospitality is to embrace a fundamental change in the culture of our parishes



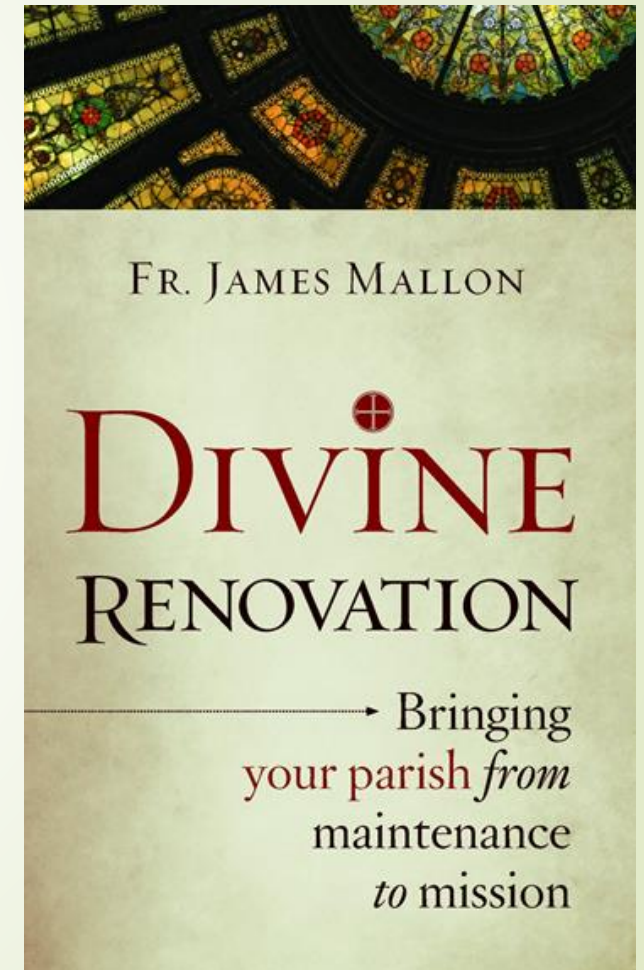
Review of the 5 Paradigm Shifts

Embracing pastoral change for cultural conversion

A Change of Culture

“This necessary change, of course, is one of culture. This cultural change means a deep, deep change. It means changing what we consider to be normative for the Christian life. It means a total conversion of our lived values, not merely the stated ones. Compared to this change, all others, including closing churches, are merely cosmetic.”

--Fr. James Mallon, *Divine Renovation*





**FROM AN INSTITUTIONAL
FAITH TO AN INTENTIONAL FAITH**

A close-up photograph of a bronze sculpture. The sculpture depicts a man with a full, curly beard and hair, wearing a dark, textured garment. He is holding a small, woolly lamb in his arms. The lighting is dramatic, coming from the upper left, which highlights the texture of the bronze and the man's features. A dark, semi-transparent rectangular box is overlaid on the right side of the image, containing white text.

**FROM A CULTURE OF
ENGAGEMENT
TO A CULTURE OF ENCOUNTER**



FROM
MAINTENANCE
TO
MISSION

FROM
PROGRAMS
TO
PEOPLE



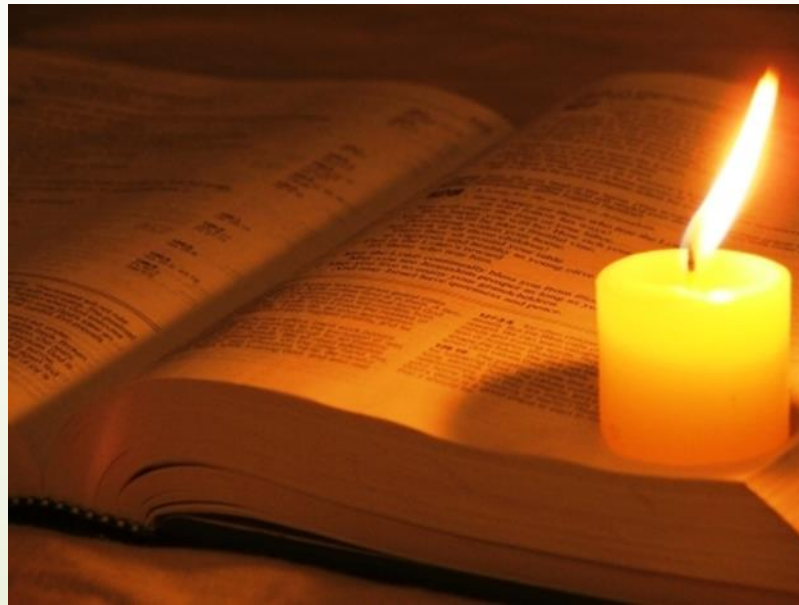


FROM
AVOIDANCE TO
ACCOUNTABILITY

Return to Radical Hospitality

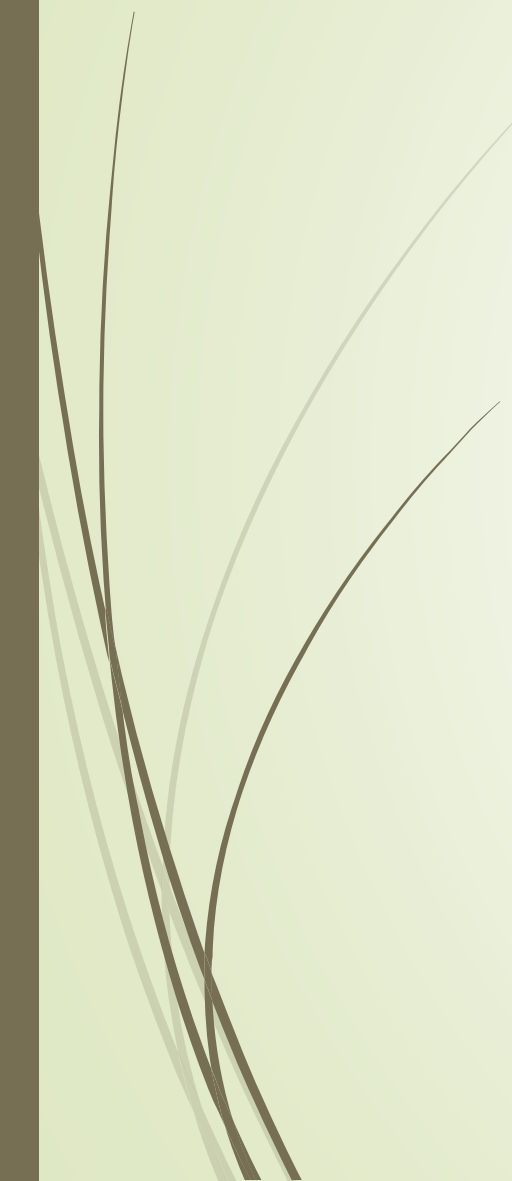
➤ **“Welcome one another, then, as Christ welcomed you.”**

(Romans 15:7)





Return to Radical Hospitality

- **Welcoming others in the Name of Christ**
 - **Treating them as we would treat Christ**
 - **Loving them as Christ loves us**
 - **Doing it all for the sake of Christ**
- 



Welcoming Others in the Name of Christ

- ▶ **Not something we undertake on our own initiative or under our own authority**
 - ▶ **We are acting on behalf of Christ**
 - ▶ **With His authority**

We are therefore Christ's ambassadors, as though God were making his appeal through us. We implore you on Christ's behalf: Be reconciled to God."

(2 Corinthians 5:20)

Treating them as We Would Treat Christ

- ▶ **We place our priority on “encounter”**
- ▶ **Reaching out to meet our fellow parishioners, a newcomer or a stranger**

All guests who present themselves are to be welcomed as Christ, for he himself will say: I was a stranger and you welcomed me,”

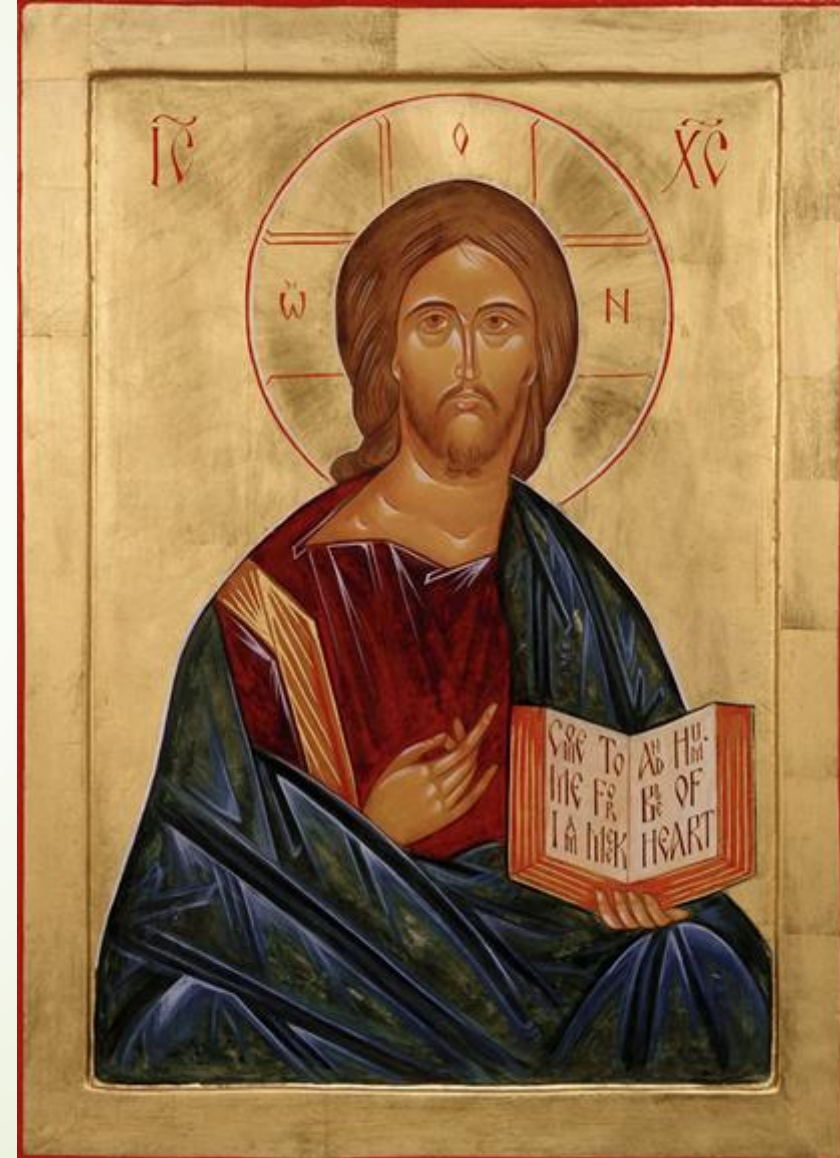
--Rule of St. Benedict #53

Meeting vs Encountering

Mary and Martha (Luke 10:38-42)

Loving Them as Christ Loves Us

- The parish isn't a closed community
- Just as Christ gave Himself up to open the gates of Heaven for us, so we should "offer ourselves" to those who come through our "gates" (i.e., the doors of the parish)
- This means taking the time to get to know others and offer to be a means through which they connect to the community and, ultimately, to God.



Doing it All for the Sake of Christ

- The parish is not a purely civic or humanitarian organization
- It is not a collection of like-minded individuals who have voluntarily joined together to advance the cause of Christ
- The parish is part of the Church, the Body of Christ, the People whom God has called out of the world and joined to Himself
 - Christ is the source of our hospitality
 - Our actions flow from our supernatural identity





Why is Radical Hospitality Important

- **It is a response to the command of God**
 - “Amen, I say to you, what you did not do for one of these least ones, you did not do for me.” (Matthew 25-45)
- **It is one of the ways by which the message of the Gospel is spread**
 - Hospitality is a form of preliminary evangelism
 - “See how they love one another”
 - It helps individuals move through the pre-discipleship thresholds of Trust, Openness, Curiosity, and Seeking



Incarnating Radical Hospitality

- **Intentionally Applying These Principles to**
 - **The Sunday Experience**
 - **The Parish Office**
 - **All Communication**
 - **Parish Registration**
 - **Events (and Event Registration)**
 - **ALL AREAS of PARISH LIFE**

What it Often Looks Like

**WELCOME TO CALIFORNIA
NOW GO HOME**

© 2002 Bad Habits, Inc.



Incarnating Radical Hospitality

A Cold Parish

Is intimidating.

Visitors are made to feel as though they do not have the required insider information or insider jargon to belong. Seems to have an unknown standard for attire/dress.

Is cliquy. Those who do not already belong go mostly unnoticed, or are looked upon with suspicion.

A Warm Parish

Has its own unique culture, but draws people into that life and helps to explain itself to the stranger.

Is made up of parishioners who care deeply about one another, but still notice the marginalized, the new, and the visitors.



Incarnating Radical Hospitality

A Cold Parish

Leaves visitors on their own when they come to church. Visitors have to fight their way into relationships with other people.

Says: 'you are an outsider, and you are on your own.'

A Warm Parish

The attitude of volunteers and staff says, 'We're glad you're here- We want to serve you. We will not leave you to get there by yourself'.

Says, 'We may not know you yet, but we are interested in who you are. You belong here. There is life and relationship available here and we will help to you discover it'.



Incarnating Radical Hospitality



Brainstorm